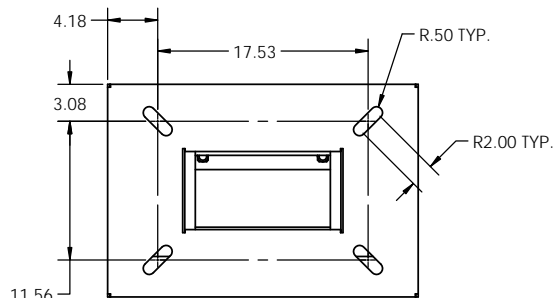
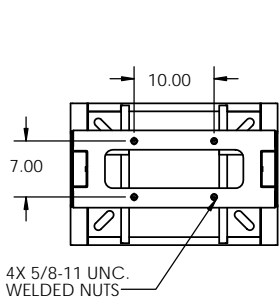
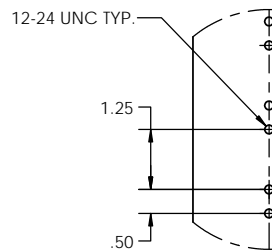


NOTES:

1. MATERIAL: HEAVY GAUGE WELDED STEEL FRAME
2. STANDARD FINISH: TELCO GRAY POWDER COAT (OTHER COLORS AVAILABLE)
3. TELCORDIA GR-63-CORE TESTED FOR SEISMIC ZONE 4 QUALIFICATION (HEIGHTS 84" AND UNDER ARE QUALIFIED UNDER CERTIFICATION).
4. TAPPED MOUNTING HOLES PROVIDED IN FRONT AND REAR FLANGES.
5. LOAD RATING: 925 LBS IN ZONE 4 SEISMIC AREAS (INCLUDES 50 LBS OF OVERHEAD CABLE).
6. HEIGHTS UNDER AND ABOVE THE LISTED HEIGHTS IN TABLE 1 ARE ALSO AVAILABLE. PLEASE CONSULT WITH SALES.

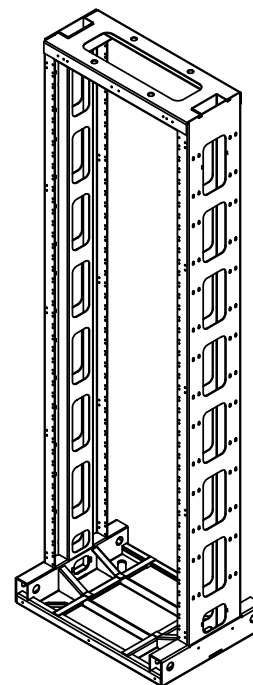
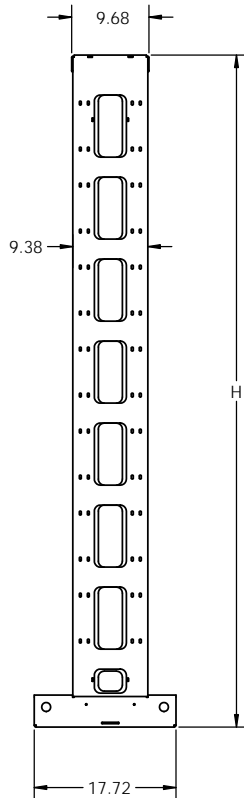
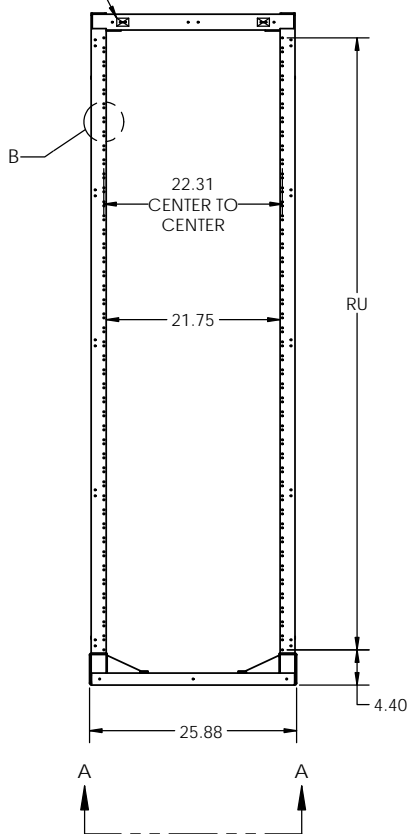


SECTION A-A  
SCALE 1 : 8



DETAIL B  
SCALE 1 : 2

MASKED GROUND PROVISIONS FRONT AND REAR



**TITAN RACKS PART NUMBER LEGEND**

TTN	B	45	084	A	A
	A	TELCO GRAY			
	B	BLACK			
	C	BLUE			
	D	WHITE			
	E	CREAM			
	F	KONE GRAY			
	A	EIA HOLE SPACING			
	M	METRIC			

072	6'
084	7'
<b>087</b>	<b>2100 MM</b>
<b>087</b>	<b>2200 MM</b>

30	300 MM DEEP BASE
45	450 MM DEEP BASE
60	600 MM DEEP BASE
75	750 MM DEEP BASE

A	19" PANEL MOUNTING
B	23" PANEL MOUNTING
E	600 MM PANEL MOUNTING

TTN TITAN RACK

***BOLD FOR METRIC ETSI RACKS ONLY***

CONFIGURATIONS TABLE			
PART NUMBER	HEIGHT (H)	RACK UNITS (RU) EIA WIDE	WEIGHT LBS.
TTNB30072Ax	72.00 IN.	37	129
TTNB30084Ax	84.00 IN.	44	142

\*\*LAST DIGIT (X) OF THE ABOVE PART NUMBER REPRESENTS COLOR. SEE PART NUMBER LEGEND TO COMPLETE PART NUMBER.

<b>Electronic Systems Support</b> www.ess.to		3233 W. Kingsley Rd. Garland, Texas 75041 PH. 972-272-2468 FAX 972-276-9844	
PROPRIETARY AND CONFIDENTIAL THE INFORMATION CONTAINED IN THIS DRAWING IS THE SOLE PROPERTY OF ELECTRONIC SYSTEMS SUPPORT. ANY REPRODUCTION IN PART OR AS A WHOLE WITHOUT THE WRITTEN PERMISSION OF ELECTRONIC SYSTEMS SUPPORT IS PROHIBITED.		TITLE: <b>TITAN RACK, 23", 450MM BASE, EIA MTG.</b>	
DRAWN	RNA	DATE	11-09-15
ENG APPR			
UNLESS OTHERWISE SPECIFIED, DIMENSIONS ARE IN INCHES		SIZE	DWG. NO.
PROJECTION:		<b>C</b>	TTNB45xxxAx-SPEC
SCALE: 1:12		REV	A
SHEET 1 OF 1			