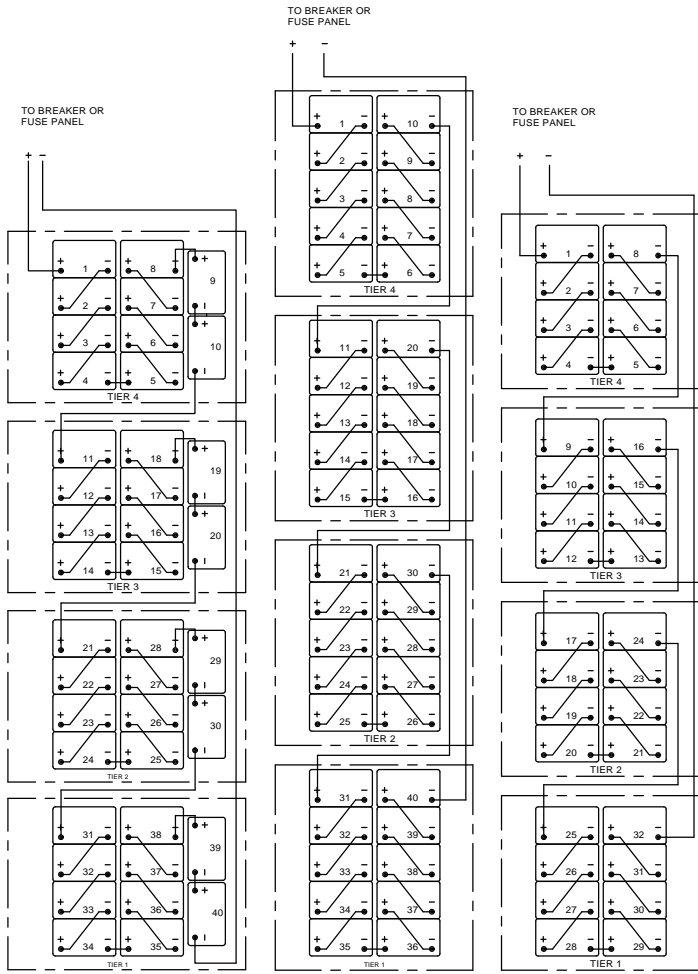


CABINET NOTES:

1. NEMA 1 DESIGN.
2. EMPTY CABINET WEIGHT 805 LBS (256 KG)
3. UL 1778 LISTED AND FULLY TESTED AT THE FACTORY PRIOR TO SHIPPING.
4. FULLY WELDED FRAME. MANUFACTURED FROM HEAVY GAUGE STEEL.
5. POWDER COATED WITH A CORROSION RESISTANT, EPOXY HYBRID POWDER USING A SIX STAGE EMERSON PRETREATMENT PROCESS.
6. BATTERIES CAN BE ACCESSED FROM FRONT, REAR, AND BOTH SIDES.
7. CUSTOM DESIGNED PALLETS FOR SHIPPING ANYWHERE LOCALLY AND GLOBALLY (UPON REQUEST).
8. BATTERY CABINET CAN BE MOVED WITH A NORMAL PALLET JACK FROM FRONT AND REAR.
9. BATTERIES ARE SECURED WITH NON-CONDUCTIVE STRAPPING FOR FOR SAFE TRANSIT.
10. STANDARD AND CUSTOM SPILL CONTAINMENT OPTIONS ARE AVAILABLE.
11. SEE HEIGHT LEGEND TABLE FOR ADDITIONAL HEIGHTS AVAILABLE, PAGE 3.
12. SEISMIC OPTIONS AVAILABLE.
13. OPTIONAL PULL OUT BATTERY SHELVES AVAILABLE.

PROPRIETARY AND CONFIDENTIAL
 THE INFORMATION CONTAINED IN THIS DRAWING IS THE SOLE PROPERTY OF ELECTRONIC SYSTEMS SUPPORT. ANY REPRODUCTION IN PART OR AS A WHOLE WITHOUT THE WRITTEN PERMISSION OF ELECTRONIC SYSTEMS SUPPORT IS PROHIBITED.

UNLESS OTHERWISE SPECIFIED: DIMENSIONS ARE IN INCHES		Electronic Systems Support www.ess.to		3233 W. Kingsley Rd. Garland, Texas 75041 PH. 972-272-2468 FAX 972-276-9844	
TITLE: BATTERY CABINET, PULL-OUT TRAYS, 12V, TOP TERMINAL					
PROJECTION:	NAME	DATE	SIZE	DWG. NO.	REV
DRAWN BY: RNA		10-31-14	C	ETP40-SPEC	A
SCALE: 1:12				SHEET 1 OF 3	

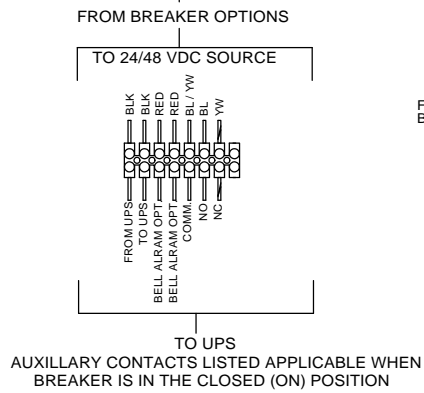
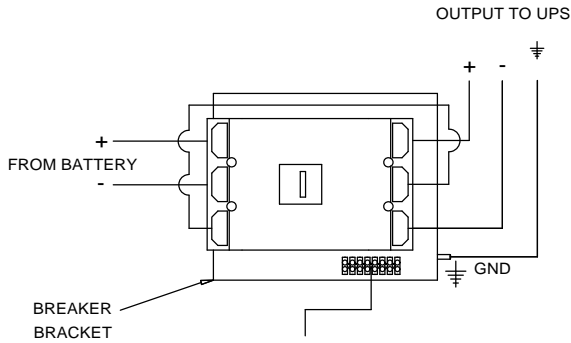


TYP 480V WIRING
(300-540WPC)

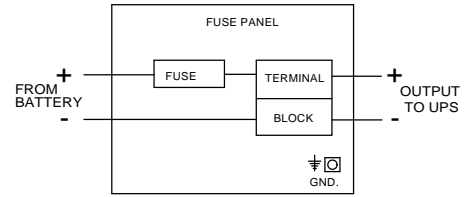
TYP 480V WIRING
(200 WPC)

TYP 384V WIRING
(300-540WPC)

BREAKER DETAIL



FUSE OPTION



BATTERY CONFIGURATION TABLE						
BATTERY MODEL NUMBER	BATTERY MANUFACTURER					MAXIMUM NUMBER OF BATTERIES PER CABINET
	ENERSYS	C & D	EAST PENN	GNB	NORTHSTAR	
12HX205	UPS12-210MR	45HR2000	S12V120F		HR12200W	60
12HX300	UPS12-300MR	HR3000	S12V170F		HR12280W	40
12HX330	UPS12-350MR	HR3500	S12V285F	NSB12-310	HR12330W	
12HX400	UPS12-400MR	HR4000	S12V300F	NSB12-425	HR12390W	
12HX505	UPS12-490MR	31HR5000	S12V370NGF		HR12500W	
12HX540	UPS12-540MR	HR5500	S12V500F	NSB12-540	HR12540W	
12HX540	UPS12-600MR		S12V550NGF			
6HX800	UPS6-620MR		S6V740NGF			

ELECTRICAL NOTES:

1. ALL CABLES USED ARE UL LISTED.
2. ALL BREAKERS ARE UL RECOGNIZED.
3. ALL FUSES ARE UL RECOGNIZED, TYPE A50P, A70P OR EQUIVALENT (FUSED CABINETS ARE NOT LISTED IN UL FILE). ALWAYS REPLACE WITH SAME TYPE OR ITS EQUIVALENT.
4. TERMINAL BLOCKS ARE UL RECOGNIZED, 600V RATED.
5. CABINETS ARE SHIPPED WITH THE BREAKER IN THE TRIPPED POSITION.
6. CABINET GROUND CONNECTION IS A 5/16-18 THREADED STUD.
7. CABLES BETWEEN BATTERY CABINET TO UNINTERRUPTIBLE POWER SUPPLY ARE OPTIONAL.

UNLESS OTHERWISE SPECIFIED:
DIMENSIONS ARE IN INCHES

Electronic Systems Support
www.ess.to

3233 W. Kingsley Rd.
Garland, Texas 75041
PH. 972-272-2468
FAX 972-276-9844

TITLE: BATTERY CABINET, PULL-OUT TRAYS, 12V, TOP TERMINAL

PROJ: ETP40-SPEC

SCALE: 1:12

SHEET 2 OF 3

PROPRIETARY AND CONFIDENTIAL
THE INFORMATION CONTAINED IN THIS DRAWING IS THE SOLE PROPERTY OF ELECTRONIC SYSTEMS SUPPORT. ANY REPRODUCTION IN PART OR AS A WHOLE WITHOUT THE WRITTEN PERMISSION OF ELECTRONIC SYSTEMS SUPPORT IS PROHIBITED.

