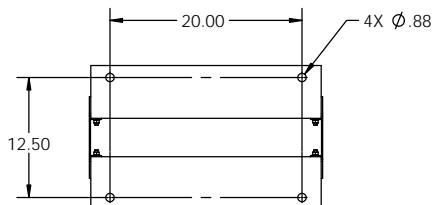
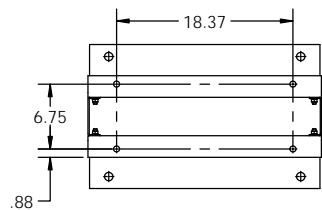
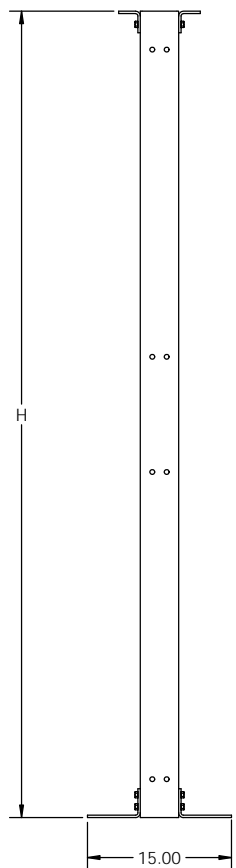
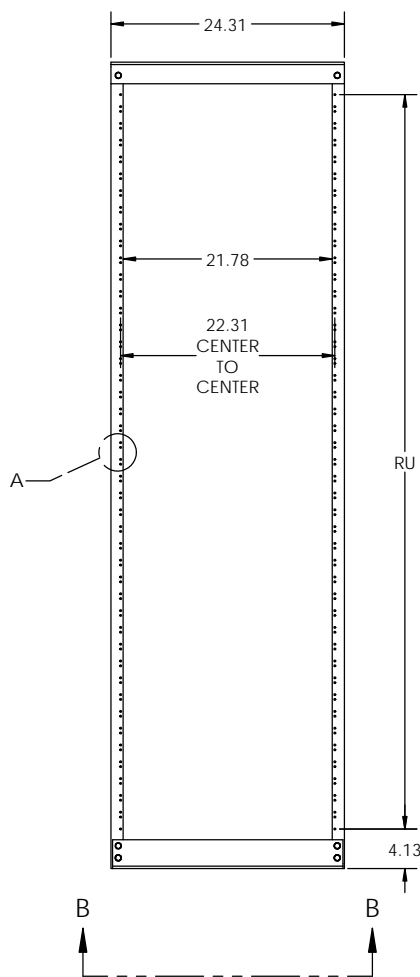


NOTES:

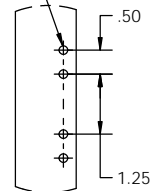
1. MATERIAL: HEAVY GAUGE WELDED STEEL FRAME
2. STANDARD FINISH: TELCO GRAY POWDER COAT (OTHER COLORS AVAILABLE, SEE PART NUMBER LEGEND))
3. IT IS RECOMMENDED TO SUPPORT RACKS TALLER THAN 8 FT. FROM TOP IN ADDITION TO FLOOR MOUNTING.
4. APPROXIMATE UNPACKAGED WEIGHT: 77 LBS (84" TALL RACK)



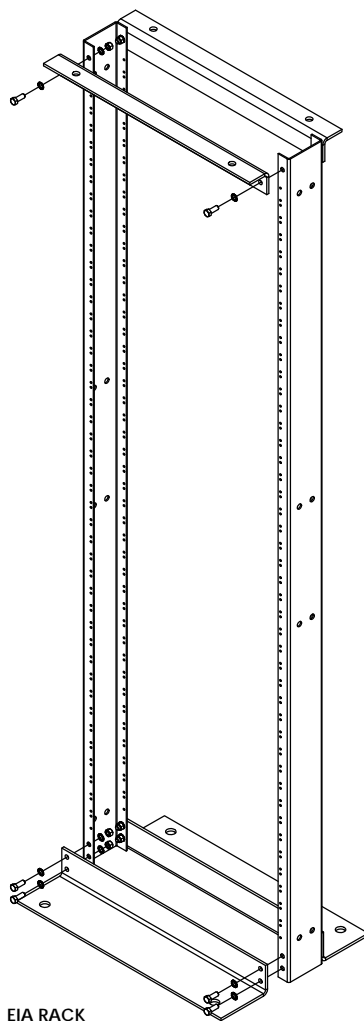
SECTION B-B
SCALE 1 : 10



12-24 UNC TYP.



DETAIL A
SCALE 1 : 2
EIA HOLE SPACING



EIA RACK

EQUIPMENT RACK PART NUMBER LEGEND

EQR 1 B 084 A A

RACK COLOR	
A	TELCO GRAY
B	BLACK
C	BLUE
D	WHITE
E	CREAM
F	KONE GRAY

HOLE SPACING	
A	EIA

RACK HIEGHT		
	H	RU(EIA)
060	5'	30
066	5'6"	34
072	6'	37
078	6'6"	41
084	7'	44
090	7'6"	47
096	8'	51
108	9'	58
138	11'6"	75

RACK WIDTH	
B	23" PANEL MOUNTING

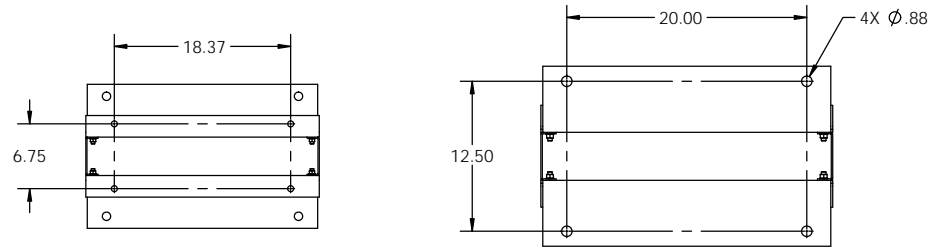
RACK STYLE	
1	BOLTED

PROPRIETARY AND CONFIDENTIAL
THE INFORMATION CONTAINED IN THIS DRAWING IS THE SOLE PROPERTY OF ELECTRONIC SYSTEMS SUPPORT. ANY REPRODUCTION IN PART OR AS A WHOLE WITHOUT THE WRITTEN PERMISSION OF ELECTRONIC SYSTEMS SUPPORT IS PROHIBITED.

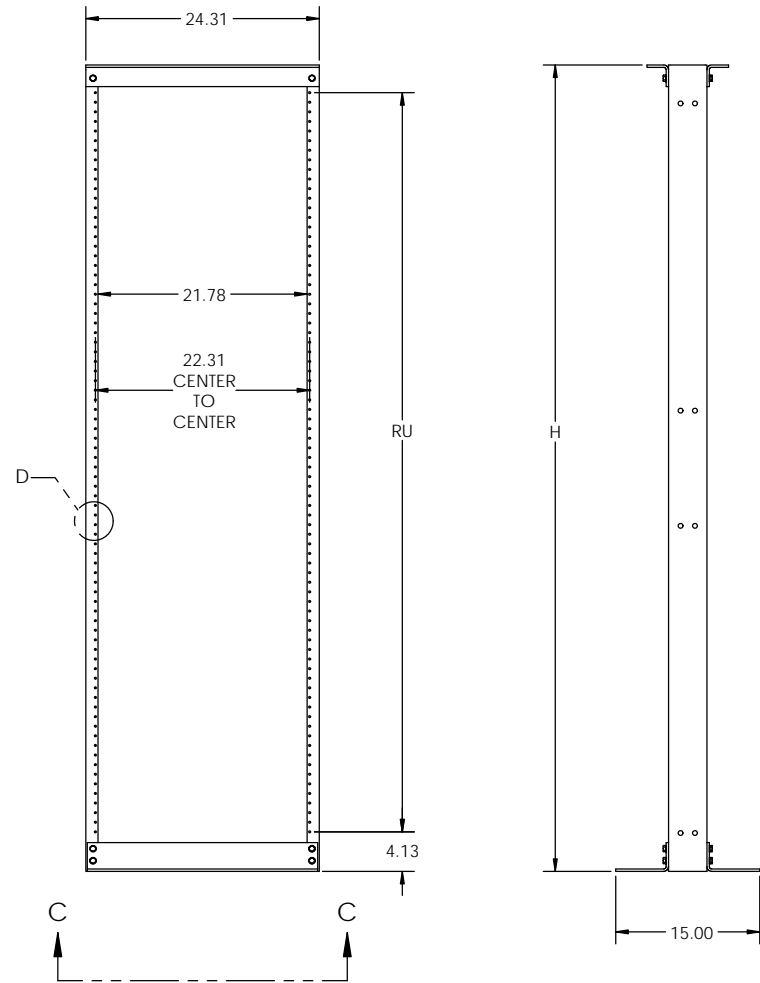
UNLESS OTHERWISE SPECIFIED: DIMENSIONS ARE IN INCHES				3233 W. Kingsley Rd. Garland, Texas 75041 PH. 972-272-2468 FAX 972-276-9844	
TITLE: EQUIPMENT RACK BOLTED, 23", 84" TALL					
PROJECTION:	NAME: LEM	DATE: 4/13/16	SIZE: C	DWG. NO.: EQR1Bxxxxx-SPEC	REV: B
SCALE: 1:12				SHEET 1 OF 2	

NOTES:

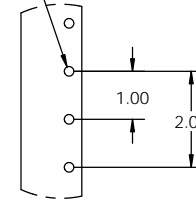
1. MATERIAL: HEAVY GAUGE WELDED STEEL FRAME
2. STANDARD FINISH: TELCO GRAY POWDER COAT (OTHER COLORS AVAILABLE, SEE PART NUMBER LEGEND)
3. IT IS RECOMMENDED TO SUPPORT RACKS TALLER THAN 8 FT. FROM TOP IN ADDITION TO FLOOR MOUNTING.
4. APPROXIMATE UNPACKAGED WEIGHT: 77 LBS (84" TALL RACK)



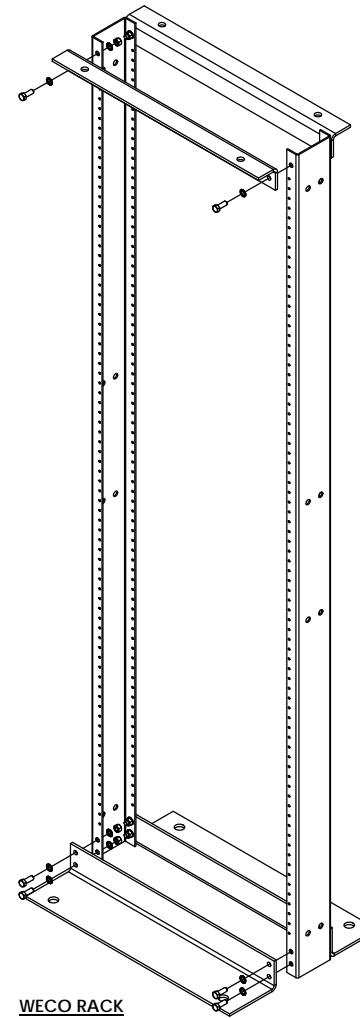
SECTION C-C
SCALE 1 : 8



12-24 UNC TYP.



DETAIL D
SCALE 1 : 2
WECO HOLE SPACING



WECO RACK

EQUIPMENT RACK PART NUMBER LEGEND

EQR 1 B 084 B A

RACK COLOR	
A	TELCO GRAY
B	BLACK
C	BLUE
D	WHITE
E	CREAM
F	KONE GRAY

HOLE SPACING	
B	WECO

	RACK HIEGHT	
	H	RU(WECO)
060	5'	27
066	5'6"	30
072	6'	33
078	6'6"	36
084	7'	39
090	7'6"	42
096	8'	45
108	9'	51
138	11'6"	66

RACK WIDTH	
B	23" PANEL MOUNTING

RACK STYLE	
1	BOLTED

PROPRIETARY AND CONFIDENTIAL
THE INFORMATION CONTAINED IN THIS DRAWING IS THE SOLE PROPERTY OF ELECTRONIC SYSTEMS SUPPORT. ANY REPRODUCTION IN PART OR AS A WHOLE WITHOUT THE WRITTEN PERMISSION OF ELECTRONIC SYSTEMS SUPPORT IS PROHIBITED.

UNLESS OTHERWISE SPECIFIED: DIMENSIONS ARE IN INCHES		Electronic Systems Support www.ess.to		3233 W. Kingsley Rd. Garland, Texas 75041 PH. 972-272-2468 FAX 972-276-9844	
TITLE: EQUIPMENT RACK BOLTED, 23", 84" TALL					
PROJECTION:	NAME: LEM	DATE: 4/13/16	SIZE: C	DWG. NO.: EQR1Bxxxxx-SPEC	REV: B
SCALE: 1:12				SHEET 2 OF 2	