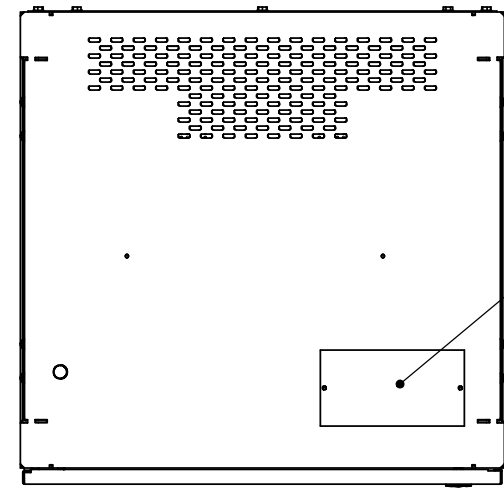
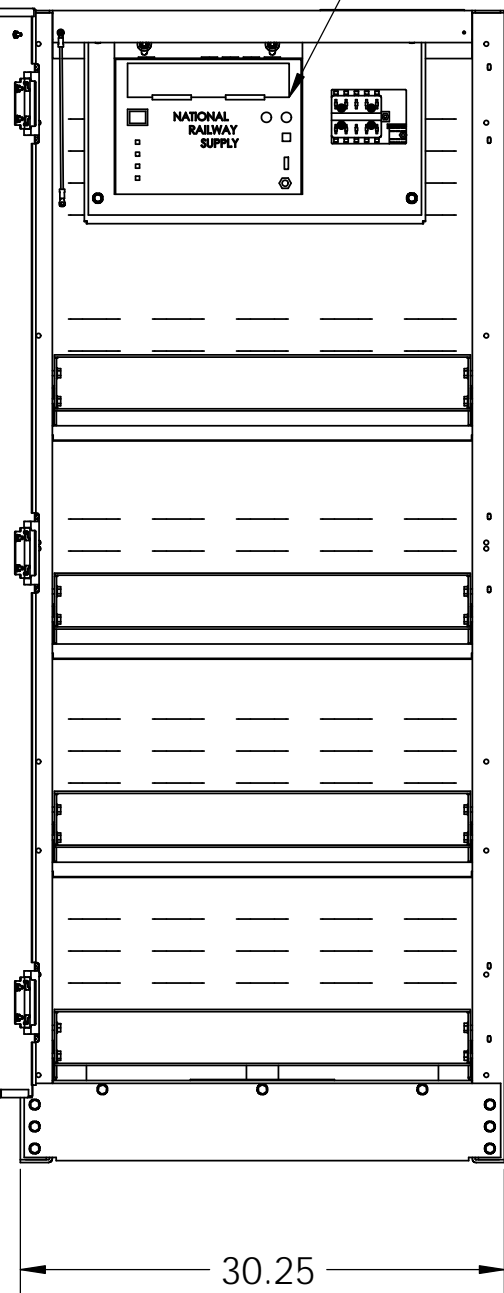


NOTES:

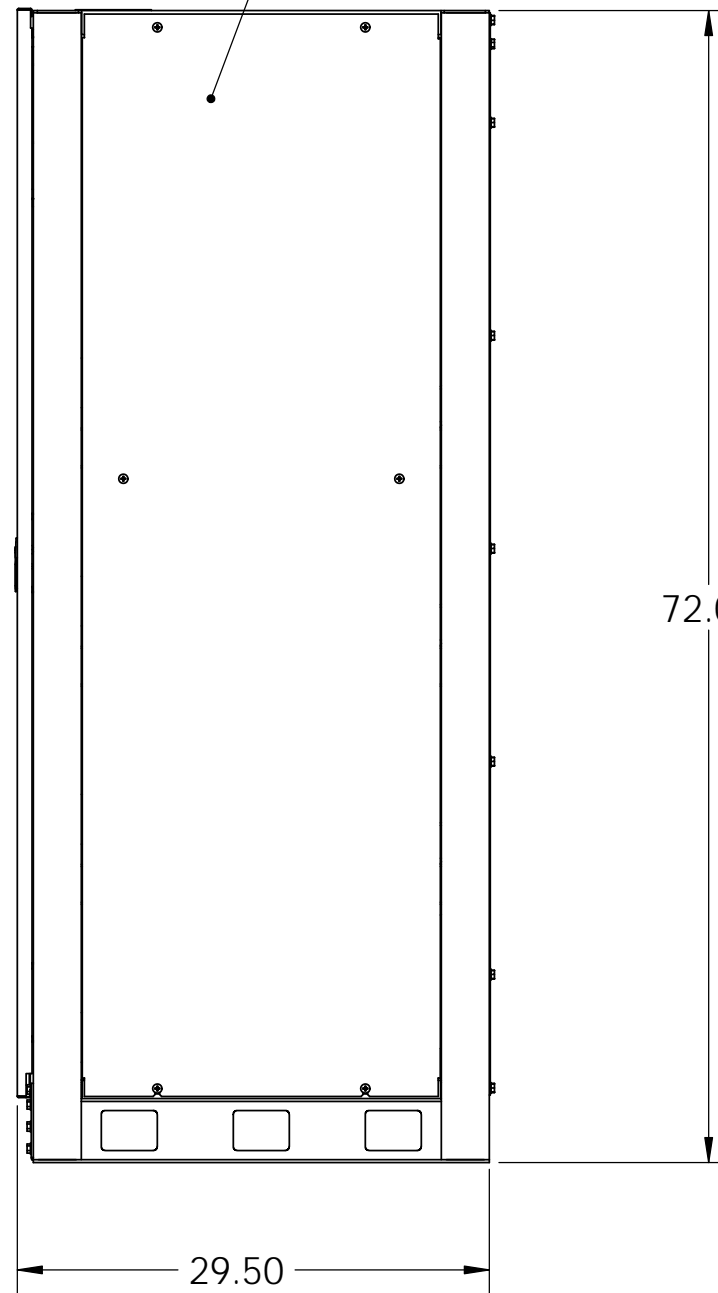
1. NEMA1 ENCLOSURE DESIGN.
2. HEAVY GAUGE WELDED FRAME.
3. TOP AND BOTTOM REMOVABLE KNOCKOUT PLATES AND HARDWARE INCLUDED.
4. CONVENIENT REMOVABLE SIDE PANELS.
5. VARIABLE VOLTAGE AND CURRENT CHARGER FACTORY INSTALLED AND TESTED.
6. ALL INTERNAL CABLES USED ARE UL LISTED.
7. STANDARD 120VAC CHARGER INPUT.
8. ALL EMPTY TIERS OF BATTERY CABINET ARE CABLED FOR FUTURE EXPANSION.
9. EMPTY CABINET WEIGHT (INCLUDING CHARGER): 520 LBS
10. DESIGN IS SEISMIC ZONE 4 COMPLIANT TO 2012 IBC, 2010 ASCE 7-10, AND CBC 2010.



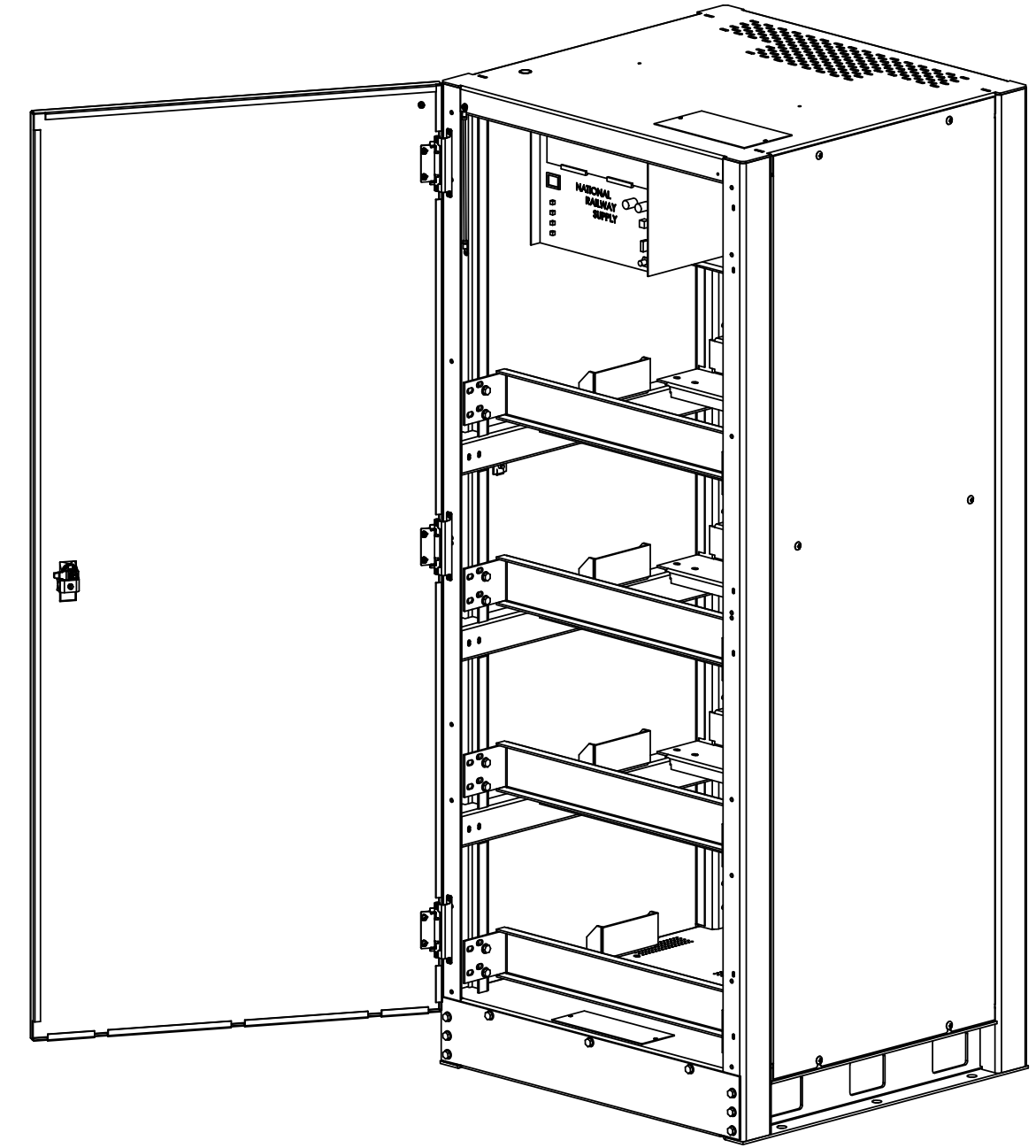
TOP AND BOTTOM  
CABLE ENTRY PLATES  
PROVIDED



BATTERY CHARGER,  
1-20 VOLTS ADJUSTABLE,  
1-20 AMPS ADJUSTABLE



REMOVABLE  
SIDE PANEL



BATTERY CONFIGURATION TABLE	
BATTERY CAPACITY	MAXIMUM NUMBER OF BATTERIES PER CABINET
350-730 WPC	20
100-190 AH	20

FRONT VIEW - SHOWN WITH DOOR OPEN

PROPRIETARY AND CONFIDENTIAL  
THE INFORMATION CONTAINED IN THIS  
DRAWING IS THE SOLE PROPERTY OF  
ELECTRONIC SYSTEMS SUPPORT. ANY  
REPRODUCTION IN PART OR AS A WHOLE  
WITHOUT THE WRITTEN PERMISSION OF  
ELECTRONIC SYSTEMS SUPPORT IS  
PROHIBITED.

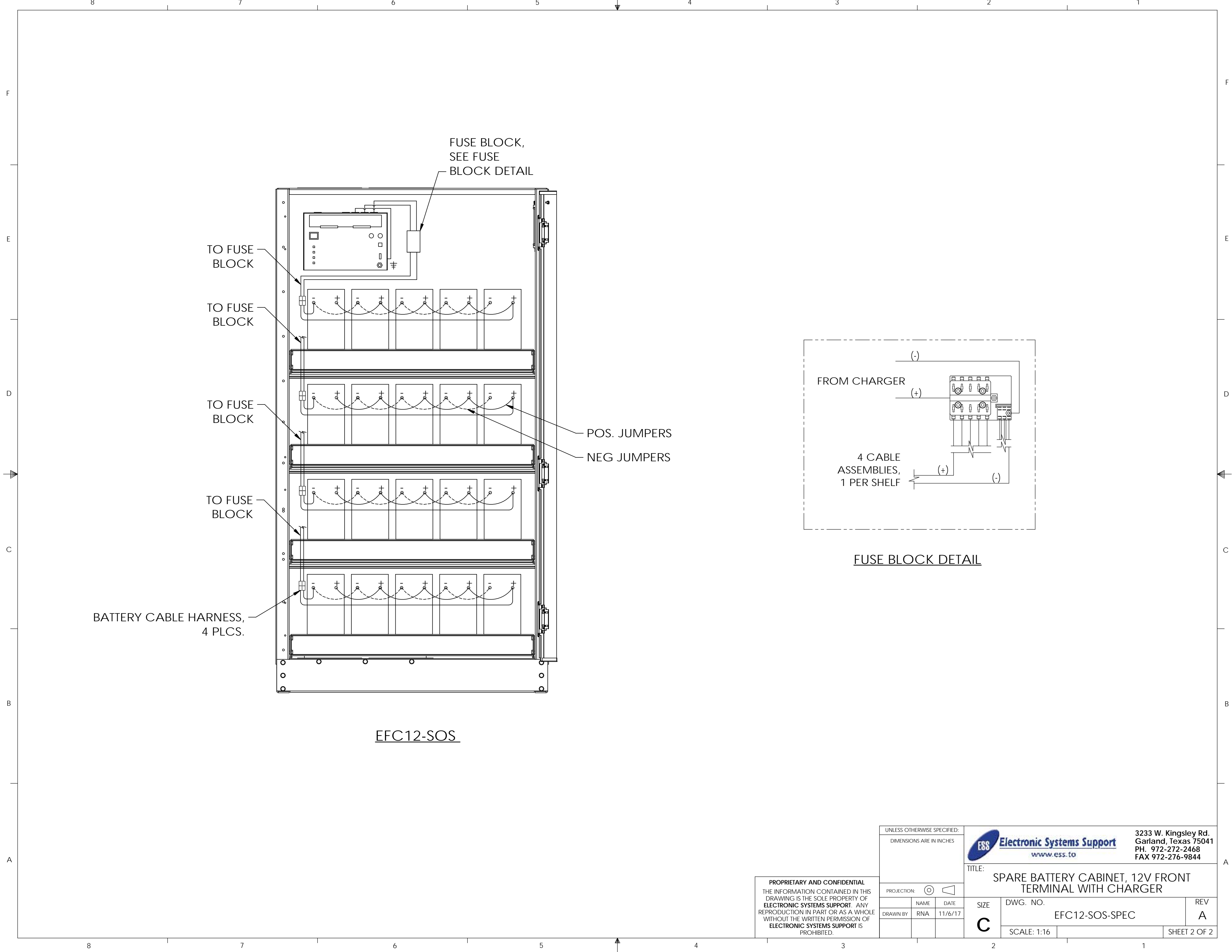
UNLESS OTHERWISE SPECIFIED: DIMENSIONS ARE IN INCHES		
PROJECTION:		
DRAWN BY:	NAME:	DATE:
RNA		11/6/17
SIZE:	DWG. NO.	
C	EFC12-SOS-SPEC	
SCALE: 1:16	SHEET 1 OF 2	



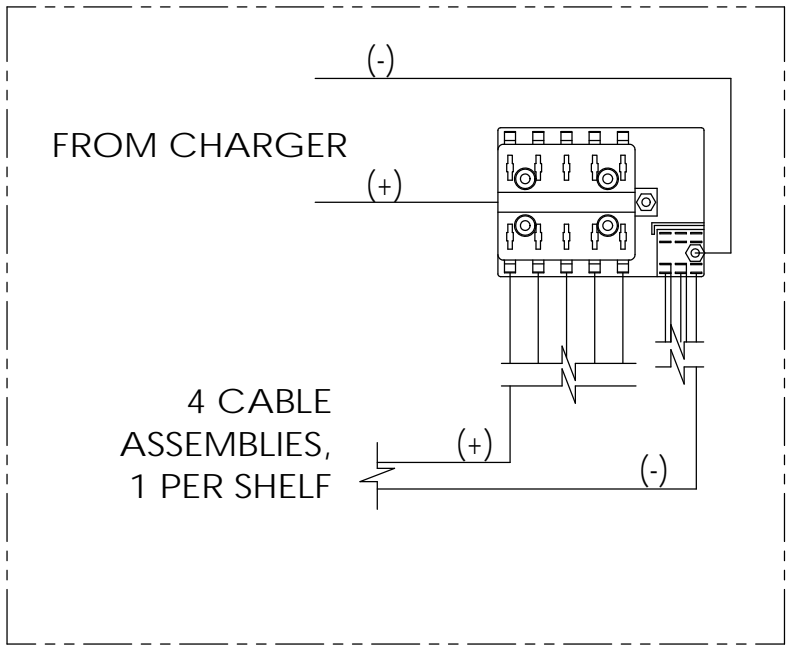
3233 W. Kingsley Rd.  
Garland, Texas 75041  
PH. 972-272-2468  
FAX 972-276-9844

TITLE:  
SPARE BATTERY CABINET, 12V FRONT  
TERMINAL WITH CHARGER

REV  
A



EFC12-SOS



FUSE BLOCK DETAIL

PROPRIETARY AND CONFIDENTIAL  
 THE INFORMATION CONTAINED IN THIS  
 DRAWING IS THE SOLE PROPERTY OF  
**ELECTRONIC SYSTEMS SUPPORT**. ANY  
 REPRODUCTION IN PART OR AS A WHOLE  
 WITHOUT THE WRITTEN PERMISSION OF  
**ELECTRONIC SYSTEMS SUPPORT** IS  
 PROHIBITED.

UNLESS OTHERWISE SPECIFIED: DIMENSIONS ARE IN INCHES		
PROJECTION:		
DRAWN BY:	NAME	DATE
	RNA	11/6/17

**ESS** **Electronic Systems Support**  
 www.ess.to

3233 W. Kingsley Rd.  
 Garland, Texas 75041  
 PH. 972-272-2468  
 FAX 972-276-9844

TITLE: SPARE BATTERY CABINET, 12V FRONT TERMINAL WITH CHARGER		
SIZE	DWG. NO.	REV
<b>C</b>	EFC12-SOS-SPEC	A
SCALE: 1:16	SHEET 2 OF 2	