

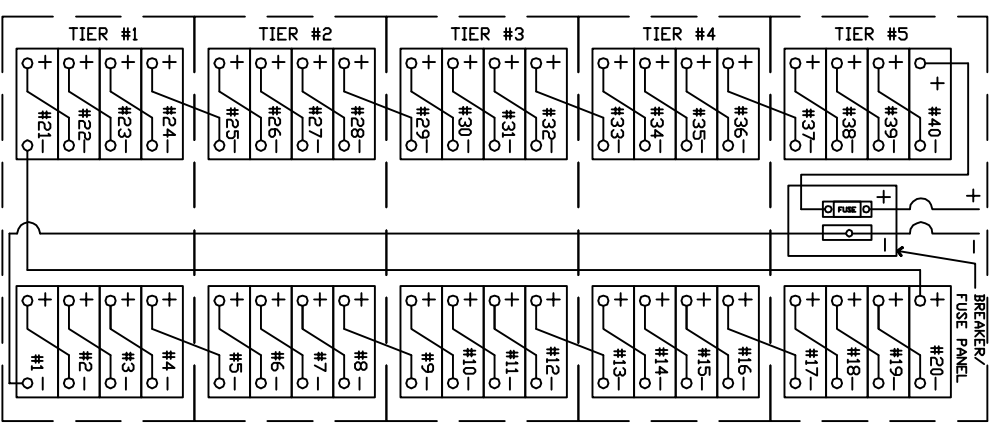
NOTES:

CABINET NOTES:

1. CABINET IS MOVABLE WITH STANDARD PALLET JACK.
2. BODY IS STEEL, COVER PANELS ARE 14 GA EG STEEL.
3. ALL PAINT IS ACID RESISTANT AND BAKED ON ENAMEL.
4. BATTERY ACCESS IS AVAILABLE THE FRONT VIA PULL OUT TRAYS.

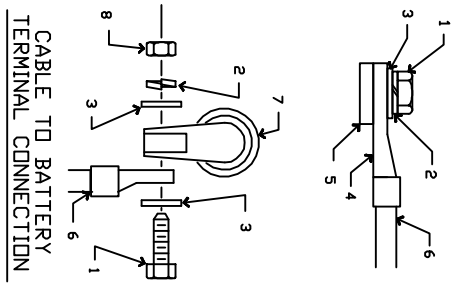
ELECTRICAL NOTES:

1. ALL WIRING IS UL LISTED EPDM, 125°C, EXTRA FLEXIBLE CABLE.
2. ALL FUSES ARE UL RECOGNIZED, TYPE A50P, A70P OR EQUIVALENT, ALWAYS REPLACE WITH SAME TYPE OR ITS EQUIVALENT.
3. TERMINAL BLOCKS ARE UL RECOGNIZED, 600V RATED.
4. CABLES BETWEEN BATTERY CABINET TO UNINTERRUPTIBLE POWER SUPPLY ARE OPTIONAL.
5. BREAKERS (WITH OR WITHOUT SHUNTS, UVRS OR AUXILIARY CONTACTS) AND BATTERY CHARGERS ARE OPTIONAL. CONSULT FACTORY FOR DETAILS.

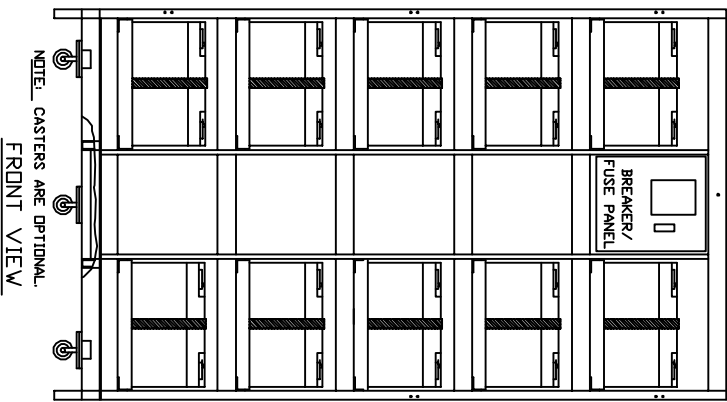


TYPICAL BATTERY WIRING

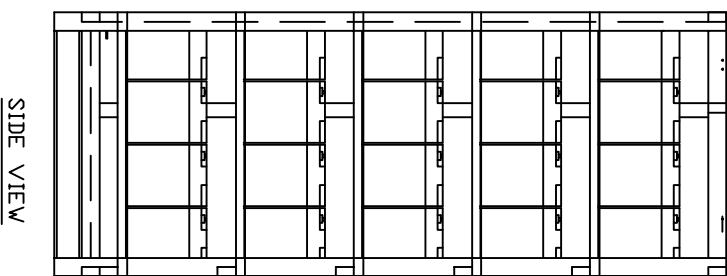
LABEL	DESCRIPTION
1	BOLT
2	SPLIT LOCK WASHER
3	FLAT WASHER
4	RING TERMINAL
5	BATT. TERM. (THREADED INSERT)
6	CABLE
7	BATT. TERM. (BOLE)
8	NUT



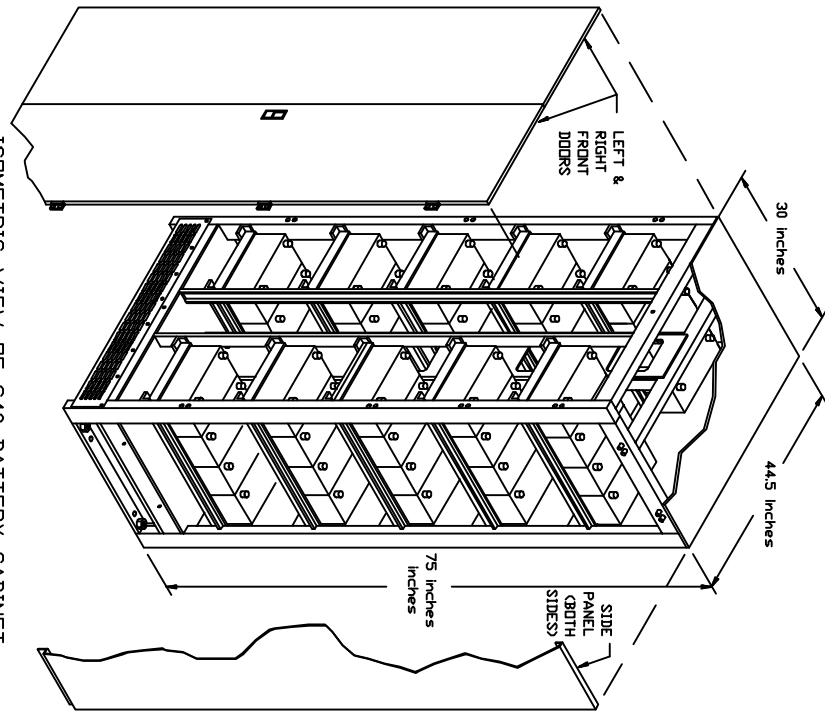
CABLE TO BATTERY TERMINAL CONNECTION



FRONT VIEW



SIDE VIEW



ISOMETRIC VIEW OF C40 BATTERY CABINET

Internal cable size	Back up time in minutes at full load	100 KVA	150 KVA	225 KVA	300 KVA	375 KVA	WEIGHT

DRAWING TITLE
C40 BATTERY CABINET SYSTEM (5 TIERS)
 PART # C40

LR	DESCRIPTIONS	DATE	APPROVED
A	FIRST ISSUE FOR DISTRIBUTION	02/10/04	T. GRIFFIN
B	Increased base channel and overall height	01/10/05	G. GRIFFIN

ESS ELECTRONIC SYSTEMS SUPPORT

110 AUSTIN STREET
 GARLAND, TEXAS 75040
 VOICE # (972) 272-2468
 FAX # (972) 276-9844
 E-MAIL: TOMMY@ESS.ITD

SCALE: NONE SHEET 1 OF 1
 C40CON