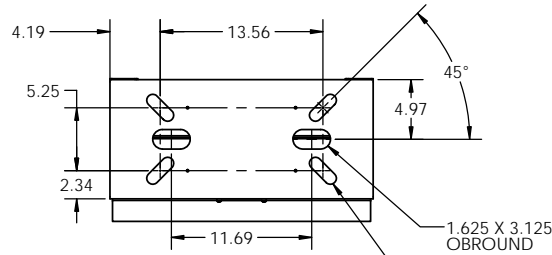
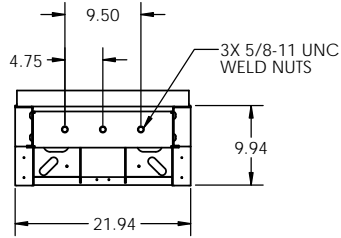
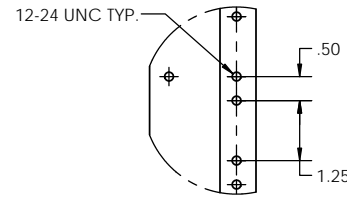


NOTES:

1. MATERIAL: HEAVY GAUGE WELDED STEEL FRAME
2. STANDARD FINISH: TELCO GRAY POWDER COAT (OTHER COLORS AVAILABLE)
3. STATIC RATING: 850 LBS
4. HEIGHTS LISTED IN TABLE 1 ARE STANDARD HEIGHTS. SEE PART NUMBER LEGEND FOR ADDITIONAL HEIGHTS AVAILABLE.
5. IT IS RECOMMENDED TO SUPPORT RACKS TALLER THAN 8 FT. FROM TOP IN ADDITION TO FLOOR MOUNTING.

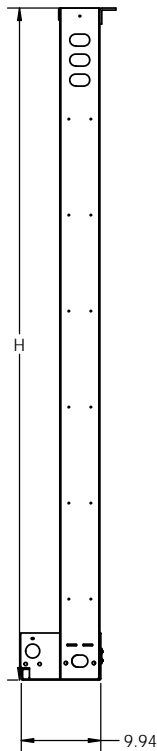
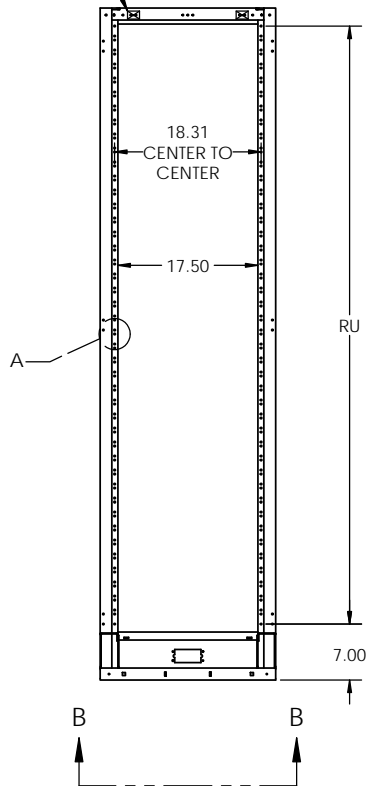


SECTION B-B  
SCALE 1 : 8



DETAIL A  
SCALE 1 : 2  
EIA HOLE SPACING

MASKED GROUND PROVISIONS THIS SIDE



EIA RACK

UNEQUAL FLANGE RACKS PART NUMBER LEGEND

UFR A 34 084 A A

|   |            |
|---|------------|
| A | TELCO GRAY |
| B | BLACK      |
| C | BLUE       |
| D | WHITE      |
| E | CREAM      |
| F | KONE GRAY  |

| HOLE SPACING |                  |
|--------------|------------------|
| A            | EIA HOLE SPACING |

|     |       |
|-----|-------|
| 060 | 5'    |
| 066 | 5'6"  |
| 072 | 6'    |
| 078 | 6'6"  |
| 084 | 7'    |
| 090 | 7'6"  |
| 096 | 8'    |
| 102 | 8'6"  |
| 108 | 9'    |
| 114 | 9'6"  |
| 120 | 10'   |
| 126 | 10'6" |
| 132 | 11'   |
| 138 | 11'6" |

|    |                                |
|----|--------------------------------|
| 31 | CLOSED DUCT                    |
| 32 | OPEN DUCT                      |
| 33 | CLOSED DUCT (TOP ANGLE OPTION) |
| 34 | OPEN DUCT (TOP ANGLE OPTION)   |

| RACK WIDTH |                    |
|------------|--------------------|
| A          | 19" PANEL MOUNTING |

| RACK STYLE |                              |
|------------|------------------------------|
| UFR        | STANDARD UNEQUAL FLANGE RACK |

| MODEL NO.   | RACK UNITS EIA(RU) | HEIGHT (H) | WEIGHT (LBS.) |
|-------------|--------------------|------------|---------------|
| UFRA34084Ax | 43                 | 84         | 79            |
| UFRA34090Ax | 46                 | 90         | 82            |
| UFRA34096Ax | 49                 | 96         | 85            |
| UFRA34108Ax | 56                 | 108        | 91            |
| UFRA34138Ax | 73                 | 138        | 106           |

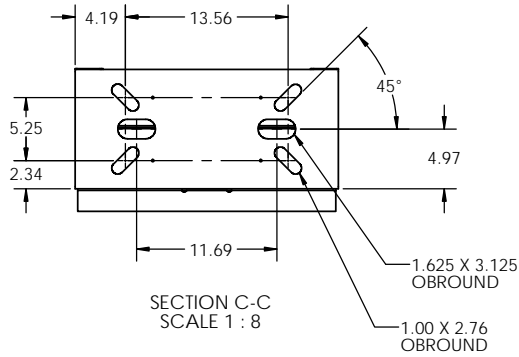
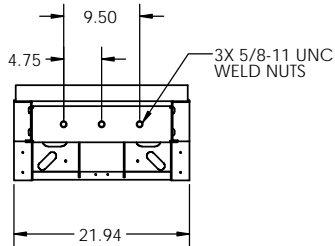
\*\*LAST DIGIT (X) OF THE ABOVE PART NUMBER REPRESENTS COLOR. SEE PART NUMBER LEGEND TO COMPLETE PART NUMBER.

PROPRIETARY AND CONFIDENTIAL  
THE INFORMATION CONTAINED IN THIS DRAWING IS THE SOLE PROPERTY OF ELECTRONIC SYSTEMS SUPPORT. ANY REPRODUCTION IN PART OR AS A WHOLE WITHOUT THE WRITTEN PERMISSION OF ELECTRONIC SYSTEMS SUPPORT IS PROHIBITED.

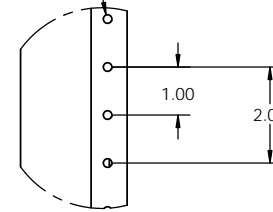
|  |               |   |                |  |        |
|--|---------------|---|----------------|--|--------|
| UNLESS OTHERWISE SPECIFIED:<br>DIMENSIONS ARE IN INCHES              |               | <b>Electronic Systems Support</b><br>www.ess.to |                | 3233 W. Kingsley Rd.<br>Garland, Texas 75041<br>PH. 972-272-2468<br>FAX 972-276-9844 |        |
| TITLE: UNEQUAL FLANGE RACK, 19", NON-SEISMIC, OPEN DUCT, W/TOP ANGLE |               |   |                |  |        |
| PROJECTION:  | NAME:         | DATE:   | SIZE: <b>C</b> | DWG. NO.: UFRA34xxxx-SPEC  | REV: A |
| DRAWN BY: RNA  | DATE: 11-9-17 | SCALE: 1:12                                     |                | SHEET 1 OF 2   |        |

NOTES:

1. MATERIAL: HEAVY GAUGE WELDED STEEL FRAME
2. STANDARD FINISH: TELCO GRAY POWDER COAT (OTHER COLORS AVAILABLE)
3. STATIC RATING: 850 LBS
4. HEIGHTS LISTED IN TABLE 1 ARE STANDARD HEIGHTS. SEE PART NUMBER LEGEND FOR ADDITIONAL HEIGHTS AVAILABLE.
5. IT IS RECOMMENDED TO SUPPORT RACKS TALLER THAN 8 FT. FROM TOP IN ADDITION TO FLOOR MOUNTING.

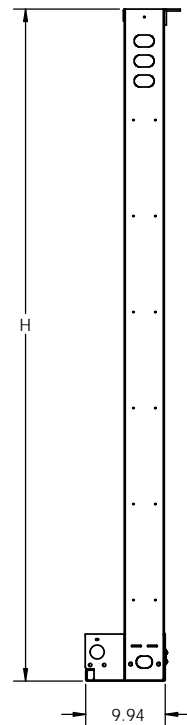
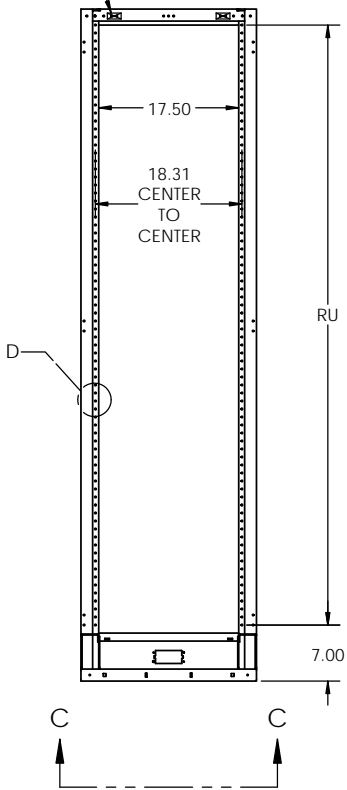


12-24 UNC, TYP



DETAIL D  
SCALE 1 : 2  
WECO HOLE SPACING

MASKED GROUND PROVISIONS THIS SIDE



WECO RACK

**UNEQUAL FLANGE RACKS PART NUMBER LEGEND**

UFR A 34 084 B A

|   |            |
|---|------------|
| A | TELCO GRAY |
| B | BLACK      |
| C | BLUE       |
| D | WHITE      |
| E | CREAM      |
| F | KONE GRAY  |

|              |                   |
|--------------|-------------------|
| HOLE SPACING |                   |
| B            | WECO HOLE SPACING |

|     |       |
|-----|-------|
| 060 | 5'    |
| 066 | 5'6"  |
| 072 | 6'    |
| 078 | 6'6"  |
| 084 | 7'    |
| 090 | 7'6"  |
| 096 | 8'    |
| 102 | 8'6"  |
| 108 | 9'    |
| 114 | 9'6"  |
| 120 | 10'   |
| 126 | 10'6" |
| 132 | 11'   |
| 138 | 11'6" |

|    |                                |
|----|--------------------------------|
| 31 | CLOSED DUCT                    |
| 32 | OPEN DUCT                      |
| 33 | CLOSED DUCT (TOP ANGLE OPTION) |
| 34 | OPEN DUCT (TOP ANGLE OPTION)   |

|            |                    |
|------------|--------------------|
| RACK WIDTH |                    |
| A          | 19" PANEL MOUNTING |

|            |                              |
|------------|------------------------------|
| RACK STYLE |                              |
| UFR        | STANDARD UNEQUAL FLANGE RACK |

| MODEL NO.   | RACK UNITS WECO(RU) | HEIGHT (H) | WEIGHT (LBS.) |
|-------------|---------------------|------------|---------------|
| UFRA34084Bx | 38                  | 84         | 79            |
| UFRA34090Bx | 41                  | 90         | 82            |
| UFRA34096Bx | 44                  | 96         | 85            |
| UFRA34108Bx | 50                  | 108        | 91            |
| UFRA34138Bx | 65                  | 138        | 106           |

\*\*LAST DIGIT (X) OF THE ABOVE PART NUMBER REPRESENTS COLOR. SEE PART NUMBER LEGEND TO COMPLETE PART NUMBER.

PROPRIETARY AND CONFIDENTIAL  
THE INFORMATION CONTAINED IN THIS DRAWING IS THE SOLE PROPERTY OF ELECTRONIC SYSTEMS SUPPORT. ANY REPRODUCTION IN PART OR AS A WHOLE WITHOUT THE WRITTEN PERMISSION OF ELECTRONIC SYSTEMS SUPPORT IS PROHIBITED.

|  |               |   |                |  |        |
|--|---------------|---|----------------|--|--------|
| UNLESS OTHERWISE SPECIFIED:<br>DIMENSIONS ARE IN INCHES              |               | <b>Electronic Systems Support</b><br>www.ess.to |                | 3233 W. Kingsley Rd.<br>Garland, Texas 75041<br>PH. 972-272-2468<br>FAX 972-276-9844 |        |
| TITLE: UNEQUAL FLANGE RACK, 19", NON-SEISMIC, OPEN DUCT, W/TOP ANGLE |               |   |                |  |        |
| PROJECTION:  | NAME:         | DATE:   | SIZE: <b>C</b> | DWG. NO.: UFRA34xxxx-SPEC  | REV: A |
| DRAWN BY: RNA  | DATE: 11-9-17 | SCALE: 1:12                                     |                | SHEET 2 OF 2   |        |